

Drainage and Wastewater Management Plans (DWMPs)

Presentation to Arun DC Planning Policy Committee

David Murphy, DWMP Programme Manager

Wednesday 27 July 2022



Challenges for Drainage and Wastewater Management



Climate Change



Population Growth



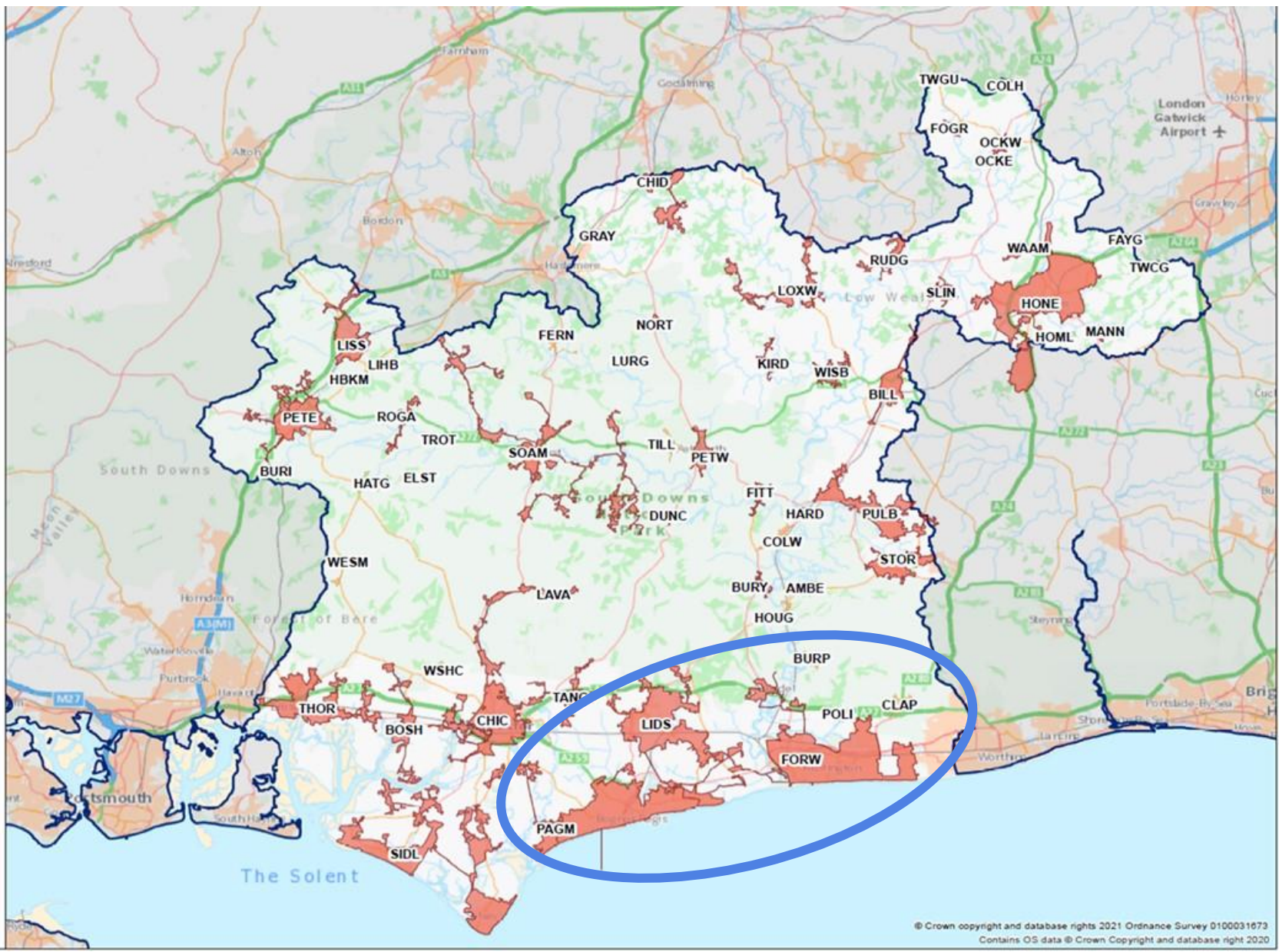
Environmental Capacity & Resilience



Affordability



Wastewater Systems in Arun & Western Streams



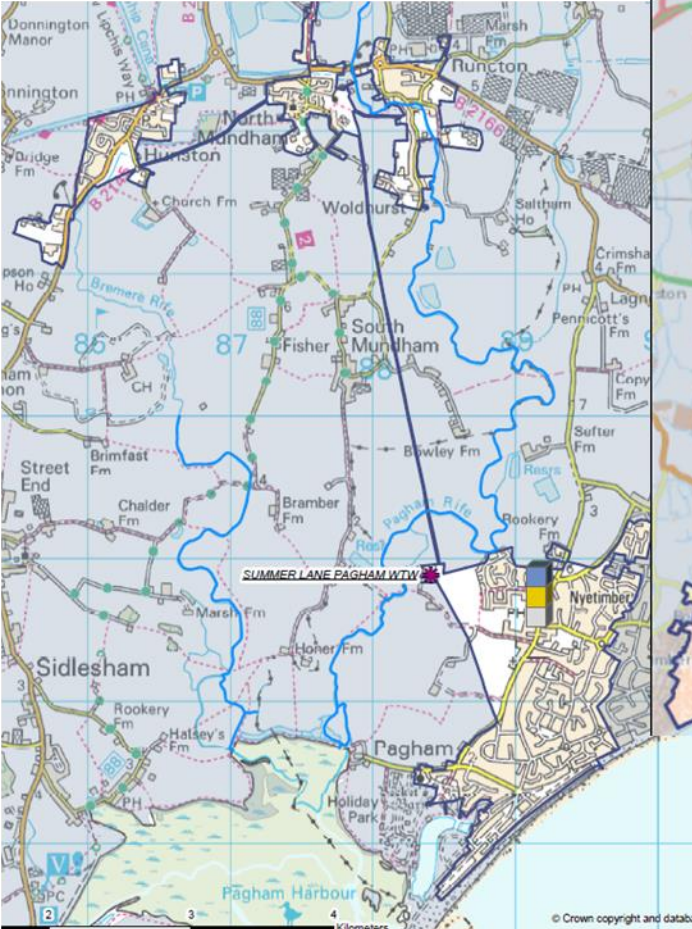
- 60 wastewater systems
- 56 WTWs
- 502 WPS
- 4,012km sewers
- 12% area
- 93% homes connected



© Crown copyright and database rights 2021 Ordnance Survey 0100031673
Contains OS data © Crown Copyright and database right 2020

Wastewater Systems in Arun District Council area

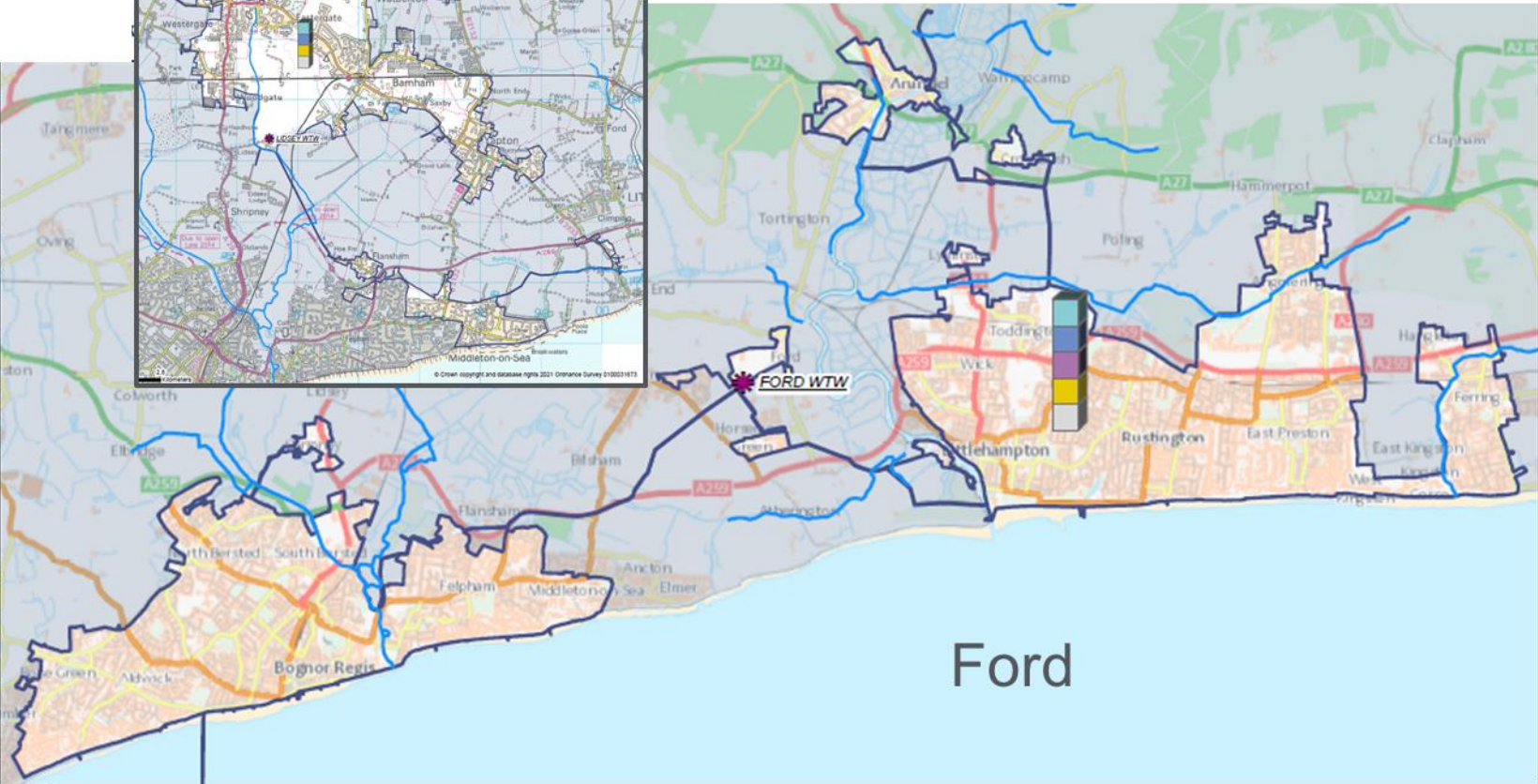
Pagham



Lidsey

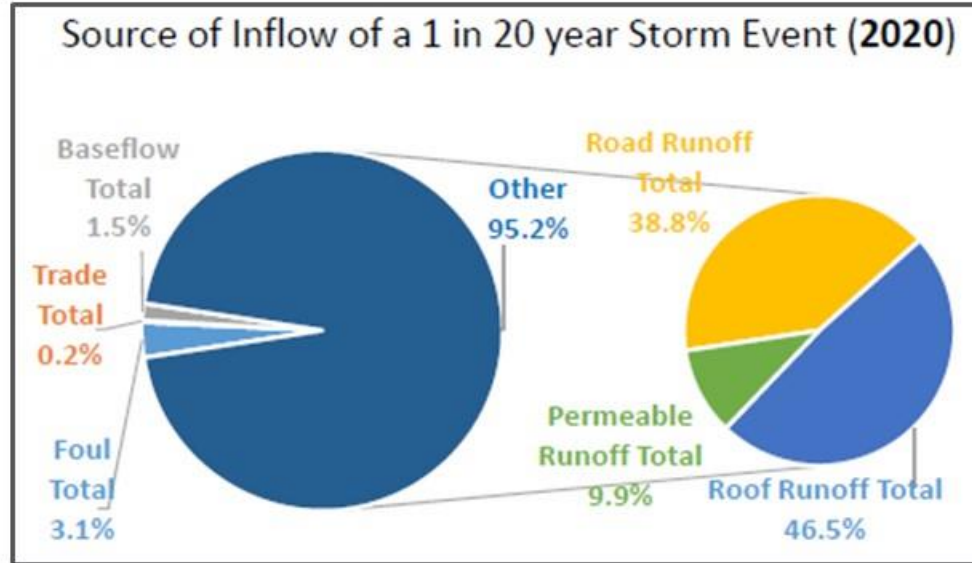
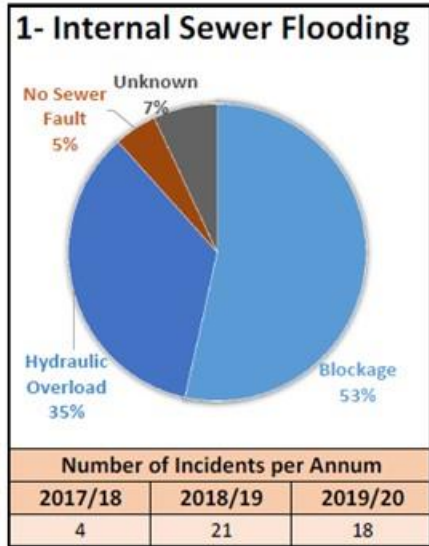


Ford

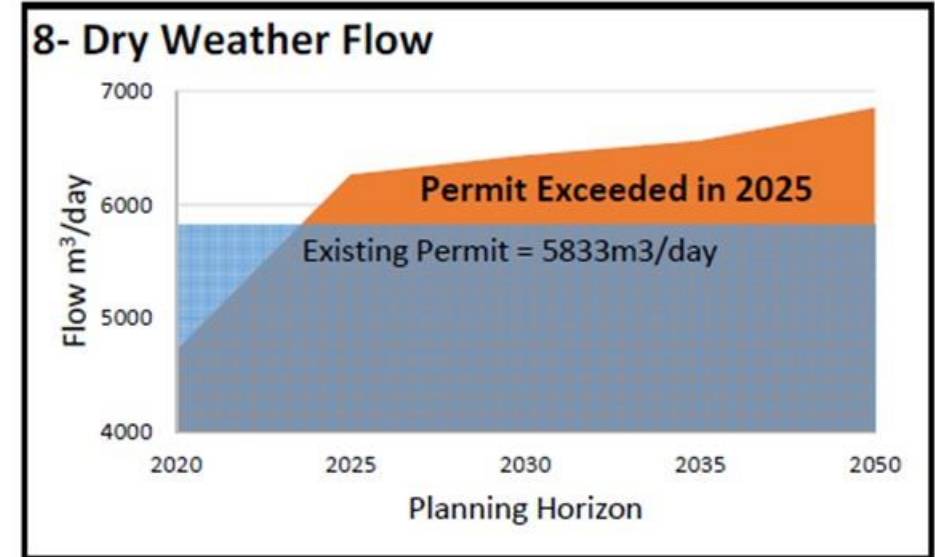


Our Findings – Risks

Ford: Sewer Flooding



Lidsey – Treatment Work Capacity



- Blockages cause ~70% of internal sewer flooding
- Up to 97% of flow in combined sewers during a storm is rainwater
- Flow can increase by 30 times the Dry Weather Flow during a storm resulting in releases of diluted sewage through storm overflows
- A significant proportion of rainwater in sewers is from roads, paved areas and roofs

Our Plan – Creating Resilient Wastewater Systems

■ Optimising our Wastewater Assets and Systems

maximising and looking after what we've got already, for example through:

- operational procedures (maintenance and incident response)
- smart technology
- interdependencies between systems and across sectors to improve resilience

■ Tackling the problems at source

For example:

- customer education to reduce blockages
- reducing rainwater getting into foul and combined systems

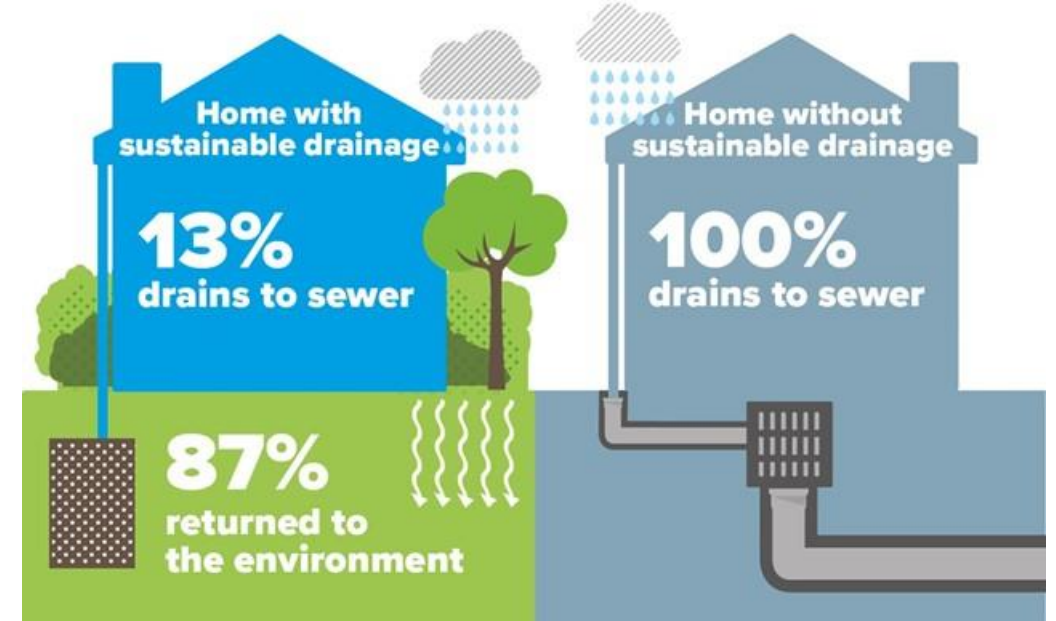


Delivering Our Plan – Sustainable Solutions

Catchment and Nature Based Solutions

- Tackling sewer flooding and storm overflows at source – rainwater separation / attenuation
- **Sustainable drainage systems (SuDS)** to “slow the flow” through green roofs, permeable paving, wetlands etc
- Keep rainwater out and allow more wastewater in

Water run-off from homes: Based on 900mm of rainfall per year



Pathfinder projects – pioneering solutions in AMP7 to support our Business Plan for AMP8



Summary of our DWMP

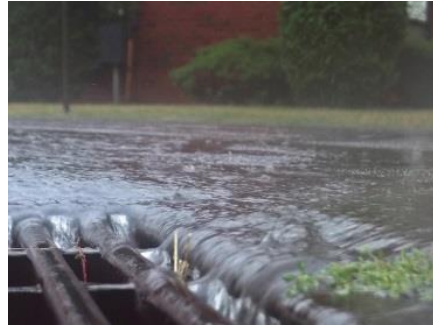
Our Actions:



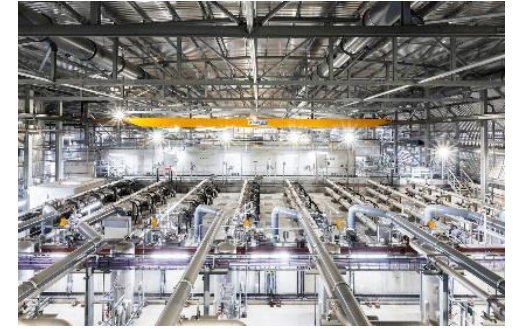
Optimise Assets



Prevent Blockages



Separate Rainwater



Enhance Treatment

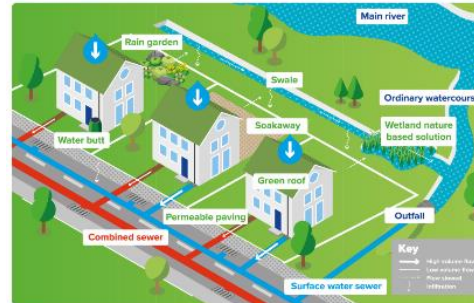
Our Approaches:



Catchment Based Approach



Collaboration & Partnerships



Grey to Green



Innovation & Technology

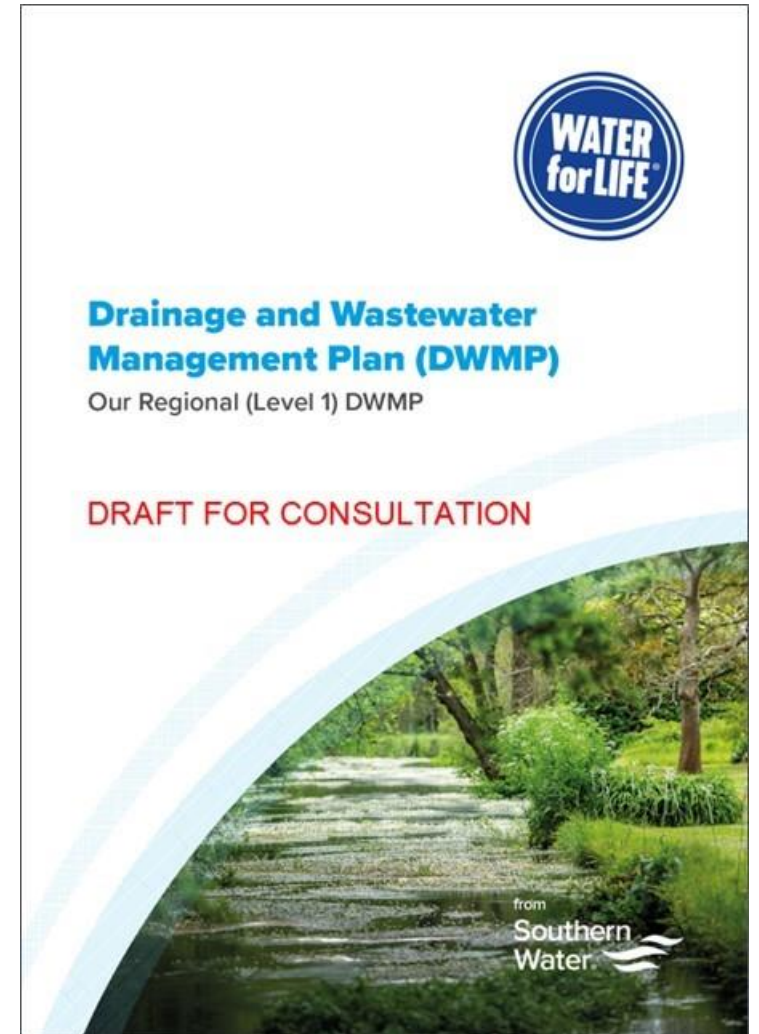


Have your say

Public consultation on our DWMP runs from Monday 13 June through to Monday 5 September 2022.

www.southernwater.co.uk/dwmp

Contact us: DWMP@southernwater.co.uk



Drainage and Wastewater Management Plans (DWMPs)

Website: www.southernwater.co.uk/dwmp

Contact us: DWMP@southernwater.co.uk



from
**Southern
Water** 